

Chick-fil-A Water Filtration

Coffee / Tea Carbon Filtration

Model: MF620

Filter Serves:
Coffee & Tea Brewers

Replacement Cartridge:
101-298

Change Frequency: Annual
4 Minute Flush Required

Contact: Selecto Scientific
800-635-4017

Carbon Filter System

Model: MF620 CC
(3-cartridge set)

Filter System Serves:
Soft Drink Towers/Carbonators
Filtered Water Faucet,

Replacement Cartridges:
109-0050 (set of 3)

Cartridge #1 - Granulated Carbon
Cartridges #2 & #3 - Carbon Block

Change Frequency: Annual
4 Minute Flush Required
(see cartridge change procedures)

Contact: Selecto Scientific
800-635-4017



Whole House Softener

Everpure Part #: EV9980-31 (FSU)
Everpure Part #: EV9983-21 (Mall)

Device Serves:
Ice Machine, RO Processor, Veggie Prep
Sink, 4-Compartment Sink, Hot Water
Heater, Kitchen Hand Sinks, Restrooms

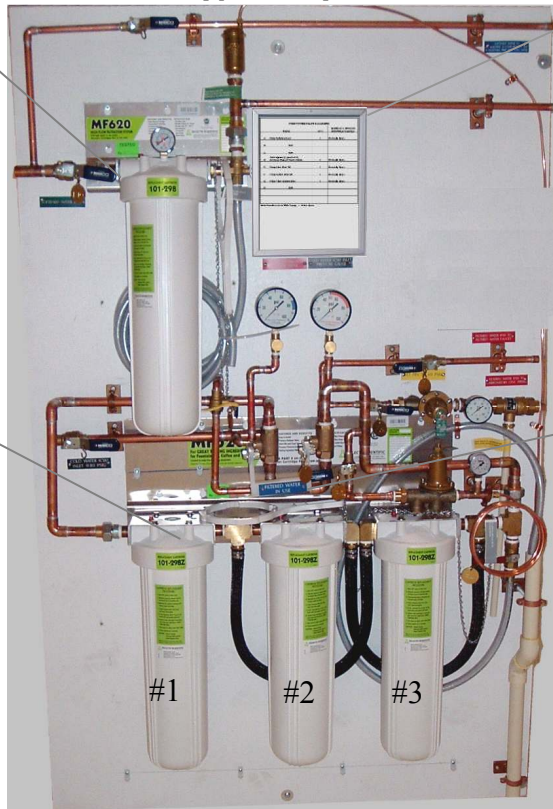
Regeneration Frequency: (most Units)
Every 2 Days

Regeneration Process:
Salt Water Flush

Average Salt Usage: 75 lbs. per Week
Salt Delivery Program Recommended

Everpure Technical Support - 800-942-1153

Type II System



Valve Tag Legend

Carbon Filter System Bypass & Test Assy.

Features:
Inlet & Outlet Gauges
Single Bypass Handle
Filter Test Rig

Contact: Facilities Mgt.
Ext. 8998



Goulds AquaBoost II Booster Pump

Model: 2AB22HM1F2E0 (whole house)

Warranty: 2 Years Parts Only

Contact:
Southeast Pump & Equipment, Inc

Distribution Center: 678-990-1388

Tech Support: 912-495-9527

770-294-2771



Chick-fil-A Water Filtration

Carbon Filter Test Procedure



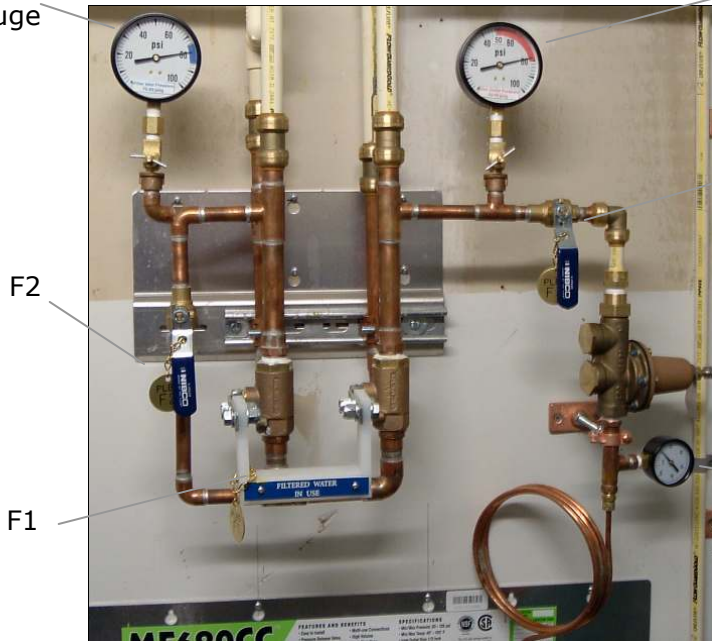
Inlet Gauge
Peaks Between 75-85 psi



Outlet Gauge
Peaks Between 50-80 psi



F1 in Bypass Position



Valve Tag Legend

VALVE	STATUS	REMOVED BY (PERSON)	SUBMITTAL (DATE)
1. Filtered Water Bypass Valve			
2. Filter Flush Valve			
3. Filter Test Valve			
4. Pressure Reducing Valve			
5. Filter Drain Valve			
6. Filter Drain Valve			
7. Filter Drain Valve			
8. Filter Drain Valve			
9. Filter Drain Valve			
10. Filter Drain Valve			
11. Filter Drain Valve			

1. Locate filtered water system valve tag legend Identify Filtered Water Bypass valve (F1), Filter Flush valve (F2) and Filter Test valve (F3).
2. Move valve F1 handle upward so that red label reads "Filtered Water In Bypass".
3. Open valve F2. Handle should be parallel to pipe.
4. Open valve F3. Handle should be parallel to pipe.
5. Confirm that test gauge reads 50±2 psi. Wait 1 minute for system to stabilize. Note: PRV pressure may be adjusted as necessary to ensure that test gauge reads 50±2 psi.
6. Confirm inlet gauge peaks between 75-85 psi. Note: If inlet gauge readings fall outside of this range contact Facilities Mgt. at ext. 8998.
7. Observe outlet gauge peaks between 50-80 psi.
8. **Change 3 carbon filter set when outlet gauge peaks below 50 psi.**
9. Return valves F3 and F2 to the off position with handles perpendicular to pipes.
10. Move valve F1 downward so that blue label reads "Filtered Water in Use".
11. The Selecto carbon filter system is now ready for use.

Carbon Filter Cartridge Change Procedure (3 cartridge set)



Move F1 handle up to "Filtered Water in Bypass" position.



Open Filter Flush to Drain Valve F4 to relieve pressure.



Remove each sump using sump wrench. Rinse each sump with mild soap solution.



Replace each sump o-ring and lubricate with supplied lubricant.



Replace each filter cartridge into sump. Hand tighten sump into housing.



Open Filter Flush Valve F2 (handle parallel to pipe).



Flush filters using Flush to Drain Valve F4. **4 minute flush required.**



Close valves F4 and F2. Return valve F1 to "Filtered Water in Use".