

INSTALLATION & INFORMATION

MOUNTING

- Ensure the area you have selected for installation is dry, well ventilated, and has access to power.
- The suction side of the pump should be positioned so that it is facing down. (See illustration below) This will optimize the priming, and avoid cavitation from air in the bag-in-box product.
- Ideally the pump should be at the same level or just below product.
- Position pump to desired area, secure mounting screws through the rubber grommet in the baseplate of pump. (See illustration below)

HOSE CONNECTIONS

- Food grade Vinyl tygon tubing or equivalent with 3/8" I.D. (8.9 mm) is recommended for both suction and discharge.
- Total length of tubing run should not exceed 50' (15.2 m).
- The vertical lift of the tubing run should not exceed 10" (3.0 m) within the 50' (15.2 m) hose run.
- Use a #17.0 oetiker clamp or a worm gear clamp with 360° uniform clamping band.
- Avoid sharp bends that could restrict flow, especially on suction side.
- After tubing installation is complete begin priming sequence. See Operation section.

FIGURE 1

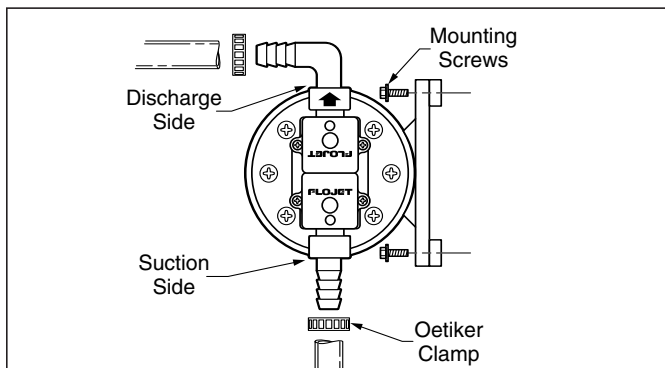
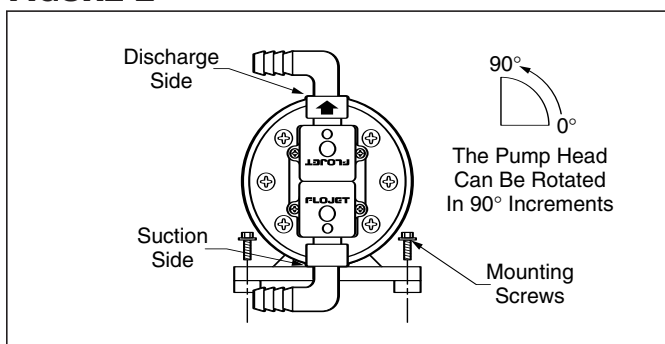


FIGURE 2



ELECTRICAL

24 Volt AC Power - Wire pump as follows: Black wire and white wire to 24 Volt power supply. Green wire to safety ground.

115 Volt AC Power - Plug pump into standard 115 Volt grounded electrical source or GFI.

230 Volt AC Power - Wire appropriate connector for system. Green wire to safety ground.

OPERATION

The Model 2125 is a demand pump. The pump will turn on when dispensing valve is open and shut off when valve is closed.

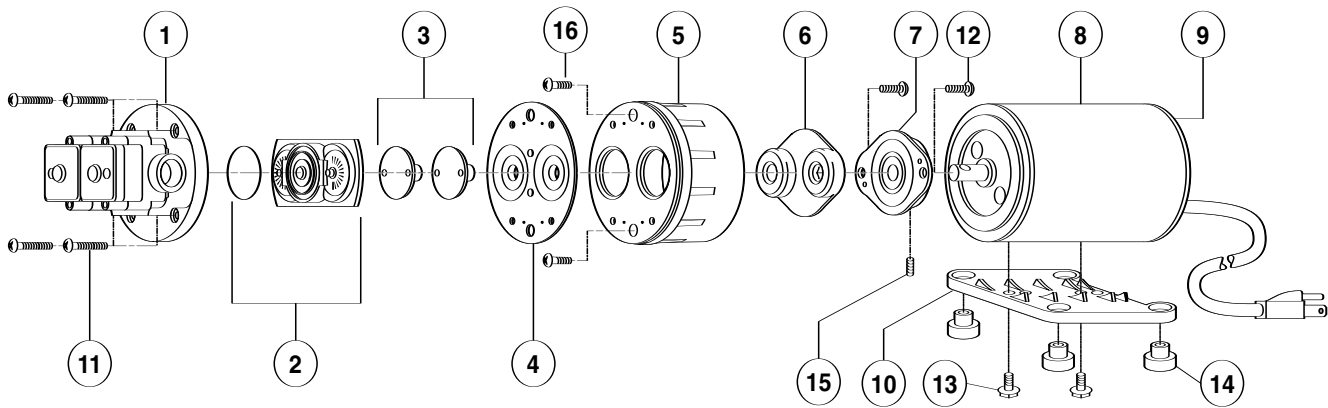
To start operation, open dispensing valve to purge air from the system. Pump will now operate automatically by starting and stopping on demand as beverage is served, and will maintain constant pressure at dispensing valve. The pump will shut off when beverage bag has been depleted. The pump will automatically reset when a full bag is connected. To purge any air trapped in the pump, open dispensing valve and run pump until all air is purged from pump and inlet lines.

The 2125 has an automatic sold out switch which stops the pump when bag is empty and high vacuum builds up in the inlet line. The sold out switch is set at 14 ± 2 in Hg. The sold out switch will automatically restart the pump when a new bag is connected and vacuum in the inlet line has returned to normal.

Note:

Flojet model 2125 is a fixed speed, non-adjustable pump. It must be carefully chosen to ensure that its output is not in excess of the requirements of the dispensing system. Failure to properly match the pump output to the application may result in permanent damage to the pump not covered under warranty.

PARTS LIST 2125 SERIES



Key	Description
1	Upper pump housing
2	Valve chamber
3	Inner pistons
4	Diaphragm
5	Bearing cover
6	Outer pistons
7	Cam / bearing assy
8	Motor

Key	Description
9	Endbell / brush assy
10	Base plate
11	Pump head screws
12	Cam bearing screws
13	Base plate screws
14	Grommets
15	Bearing / shaft set screw
16	Bearing Housing screws

TROUBLE SHOOTING

1. Pulsating flow - pump cycling on and off:

- Restricted pump delivery. Check discharge lines, fittings, valves.

2. Failure to prime - Motor operates, but no pump discharge:

- Empty product bag.
- Bag connector not fully engaged.
- Obstruction in product discharge line or dispensing valve.
- Air leak in intake line.
- Punctured pump diaphragm.
- Defective pump check valve.
- Leak or break in product inlet or discharge line.

3. Pump continues to operate when product is "Sold Out":

- Leak in suction line or faulty automatic shutoff.
- Punctured pump diaphragm.
- Discharge line leak.
- Insufficient voltage to pump.
- Defective pump check valve.

PRODUCT WARRANTY

Flojet warrants this product to be free of defects in material and/or workmanship for a period of one year after purchase by the customer from Flojet. During this one year warranty period, Flojet will, at its option and at no charge to the customer, repair or replace this product if found defective. No product will be accepted for return without a return material authorization number. All return goods must be shipped with transportation charges prepaid. This is only a summary of our Limited Warranty. For a copy of our complete warranty, please request Form No. 100-101.

4. Low pressure at dispensing valve:

- Excessive line restriction due to undersize tubing or fittings.
- Check pressure adjustment.
- Check motor speed adjustment.
- Air leak at pump intake.
- Accumulation of debris inside pump and plumbing.
- Worn pump bearing (excessive noise).
- Punctured pump diaphragm.
- Defective motor. Defective pump check valve.

5. Pump fails to restart automatically after bag replacement:

- Bag connector not fully engaged.

6. Pump fails to stop when dispensing valve is closed.

- Leak in discharge line.
- Defective pump check valve.
- Empty product bag and
- Insufficient voltage to pump.
- Faulty auto shutoff.
- Speed control set to low.
- Faulty pump.

RETURN PROCEDURE

Prior to returning any product to Flojet, call customer service for an authorization number. This number must be written on the outside of the shipping package. Place a note inside the package with an explanation for return as well as the authorization number. Include your name, address and phone number.



Engineered for life

U.S.A.
Flojet
666 E. Dyer Rd.
Santa Ana, CA 92705
Phone: 714.557.4700
Fax: 714.628.8478

UNITED KINGDOM
Flojet
Bingley Road, Hoddesdon
Hertfordshire EN11 0BU
Tel: +44 (0) 1992 450145
Fax: +44 (0) 1992 467132

www.flojet.com